



ISSAQUAH  
SCHOOLS  
FOUNDATION

# Cultural Bridges



## Family Guide | 2019–2020

Information to Help Families Navigate the Issaquah School District

Dear Readers,

Every time I talk to families with students that have graduated, I like to ask them what they wish they had known before their kids started their school years. Their answers are always very similar. They wish they had taken more time to enjoy each year, and they wish they had been more involved and informed along the way.

The good news is that you still have time, and we have wonderful resources for you! Cultural Bridges magazine helps families stay informed, and it is published in six different languages. Look for it at the office of any of the 24 schools in our District. We also offer this Family Guide which is a compilation of information from the Issaquah School District for families with kids in kindergarten, elementary, middle and high school.

I would like to recommend that you also read your student's handouts, regularly check the website of the particular school that your child attends and visit the website for your child's school's PTSA.

Once you are informed about your child's education, please get involved and actively participate! As you'll read on **pages 12-13**, schools in our District are very fortunate to have the support of the Issaquah Schools Foundation and PTSAs. These organizations make a big difference in the daily life of our students, and it's our responsibility as parents and family members to contribute. You don't even need to speak English in order to volunteer or to be a donor! And if you need assistance understanding anything, please don't hesitate to contact us. We are here to help you.

Here's to an amazing 2019-2020 school year!

Alicia Spinner  
Magazine Editor

<b>Issaquah Schools Foundation</b>	<b>3</b>
<b>Issaquah School District</b>	<b>4</b>
<b>Kindergarten to High School</b>	<b>6</b>
<b>Four Key Partners in Education</b>	<b>12</b>
<b>Calendar</b>	<b>14</b>
<b>Kindergarten</b>	<b>16</b>
<b>Elementary School</b>	<b>17</b>
<b>Middle School</b>	<b>20</b>
<b>High School</b>	<b>21</b>
<b>Resources for Families</b>	<b>23</b>



**Cultural Bridges**

Issaquah Schools Foundation

is a program of



**ISSAQUAH  
SCHOOLS  
FOUNDATION**

## CULTURAL BRIDGES MAGAZINE FAMILY GUIDE 2019-2020

**MARISOL VISSER**  
*Program Manager*  
marisol@isfdn.org

**ALICIA SPINNER**  
*Magazine Editor*  
culturalbridges@isfdn.org

**LUNA EGIDO MARTÍN**  
*Design*

**LIZ ST. ANDRE**  
*English Editor*

**KELLY BURCH**  
*Cover*

Like us on  
**Facebook @CBforeducation.**  
To receive the magazine in  
PDF format, email  
**culturalbridges@isfdn.org.**  
Please specify the language  
you want to receive:  
**English, Chinese Simplified,  
Korean, Russian, Spanish, or  
Vietnamese.**



Picture by Jenn Sande  
Alicia Spinner and Marisol Visser

Cultural Bridges Magazine, all rights reserved. Cultural Bridges Magazine is a free community magazine distributed locally and subsidized by Issaquah Schools Foundation. Its mission is to provide our community readers information that will enrich their quality of life covering topics such as education, health, nutrition, current events and the diverse culture in the city of Issaquah. Cultural Bridges for Education does not necessarily endorse or represent the views expressed in articles and advertisements found in the magazine, and is not responsible for the information, products and services that our advertisers published. Some parts of this publication may be a reproduction, translation or reprint where prior authorization is requested.

## Welcome to the Issaquah School District!

Thank you for taking time to read our Cultural Bridges Family Guide. We hope you will find this information helpful as you navigate your way through the Issaquah School District.

Proudly supported by the Issaquah Schools Foundation, the Cultural Bridges program is a valuable resource for parents, guardians and students in our school communities of Issaquah, Sammamish, Renton, Bellevue and Newcastle.

At the Issaquah Schools Foundation, we fuel success for **ALL 20,500 students at ALL 24 schools**, funding the gap between what the school district provides and what is needed for an exceptional educational experience for your child.

But, at the heart of the Foundation is **YOU!**

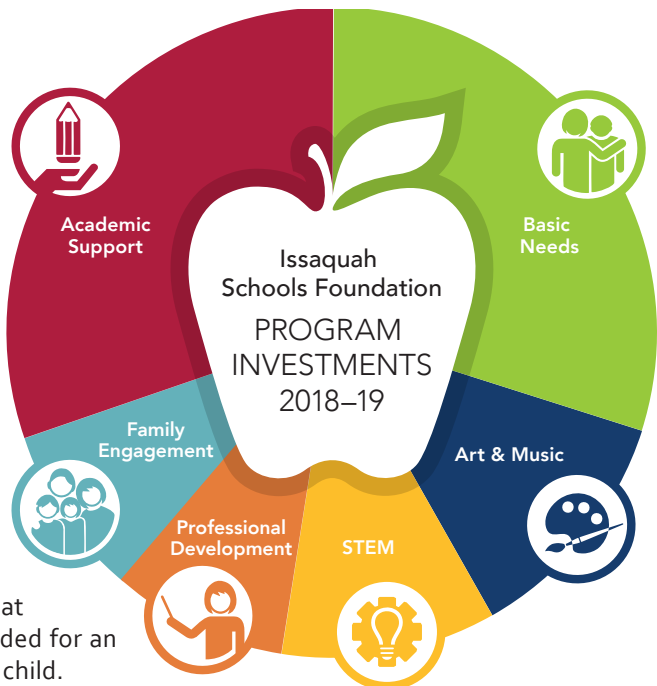
Your support fuels vital programs including after school homework help, artistic support, STEM clubs, robotics, Tools4School backpacks and supplies, snack and lunch support, professional development, teacher grants and more. Your generosity as a donor to the Foundation makes programs like these possible!

The Issaquah Schools Foundation is 501C3 non-profit organization that does fundraising and friend-raising to support all students in the Issaquah School District. In partnership with the Issaquah School District, we work together with our schools, educators, volunteers, PTSA and other community partners to drive resources to help all students achieve the promise of their potential. We strive to be the unifying organization that enables the school District to provide access to exceptional opportunities district-wide. **Together, we ignite learning, improve educational outcomes and prepare all students to be confident, competent and engaged citizens.**

We would love for you to engage with us... please volunteer, donate or share your ideas about what we can do to help our students succeed! If at any time you have questions, please contact us at [info@isfdn.org](mailto:info@isfdn.org) or visit [www.isfdn.org](http://www.isfdn.org). We would love to hear from you, or better yet stop by our office. We would love to meet you!

To every child's success,

Cornell Atwater  
Executive Director



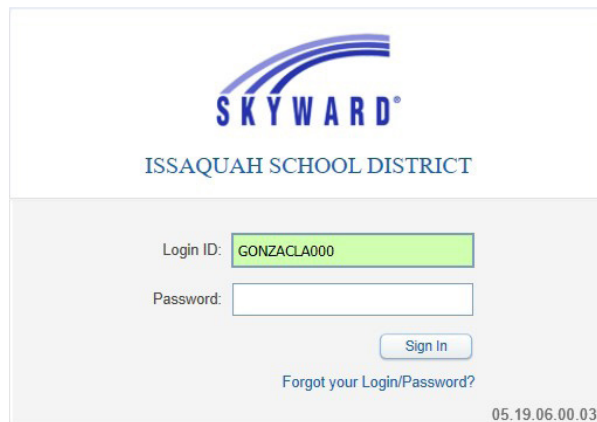


# Welcome to the Issaquah School District (ISD)

The District's mission: "Our students will be prepared for and eager to accept the academic, occupational, personal and practical challenges of life in a dynamic global environment." Skilled and caring staff strive to achieve that mission using a variety of teaching methods and measurements of how well students are learning.

Our District uses Family Access to give parents and students online access to student information, including test scores, attendance, class schedules, and immunization records. Parents can verify online that the emergency contact information for each student is correct.

To login into Family Access (also called Skyward), go to <https://issaquah.wednet.edu/family/FamilyAccess> and click on "Log in to Family Access". You will also be able to find this link also on the website of your school. Your Login ID is the first 5 letters of your last name, the first 3 letters of your first name followed by 000 (3 zeros). For example, for Claudia Gonzalez...



If you don't have your password, go to the login page and click on "Forgot your Login/Password?" Enter your email or Login ID and you will be emailed a link to reset your password. If you don't have an email address on file, please contact your student's school for assistance.

You will receive information in August regarding the back to school check-in process. During this process, you will verify your information in the Issaquah School District system.

## School Phone Numbers

### Elementary Schools

Apollo: 425-837-7500  
 Briarwood: 425-837-5000  
 Cascade Ridge: 425-837-5500  
 Challenger: 425-837-7550  
 Clark: 425-837-6300  
 Cougar Ridge: 425-837-7300  
 Creekside: 425-837-5200  
 Discovery: 425-837-4100  
 Endeavour: 425-837-7350

Grand Ridge: 425-837-7925  
 Issaquah Valley: 425-837-6600  
 Maple Hills: 425-837-5100  
 Newcastle: 425-837-5800  
 Sunny Hills: 425-837-7400  
 Sunset: 425-837-5600

### Middle Schools

Beaver Lake: 425-837-4160  
 Issaquah Middle: 425-837-6818

Maywood: 425-837-6909  
 Pacific Cascade: 425-837-5911  
 Pine Lake: 425-837-5710

### High Schools

Gibson Ek: 425-837-6350  
 Issaquah: 425-837-6000  
 Liberty: 425-837-4800  
 Skyline: 425-837-7700



## Cultural and Family Partnerships

The Issaquah School District supports students' success by supporting families.

Contact the Family Partnership Liaison assigned to your school(s) if you have any questions about schools. For example, what is the process for enrolling your child in elementary school? What clubs, sports, and activities or resources do schools provide? We can help you with these and any other questions you may have. Additionally, we can connect you with school counselors, teachers, and other staff who can help your child succeed.

### Francisca Mejia Campos

(Español)

**Family Partnership Liaison**

425-837-7141

CamposF@issaquah.wednet.edu

Serving:

Issaquah High School

Issaquah Middle School

Pacific Cascade Middle School

Clark Elementary

Issaquah Valley Elementary

Sunny Hills Elementary

Sunset Elementary

### Wenli Mithal (中文)

**Family Partnership Liaison**

425-837-7106

MithalW@issaquah.wednet.edu

Serving:

Skyline High School

Beaver Lake Middle School

Pine Lake Middle School

Cascade Ridge Elementary

Challenger Elementary

Creekside Elementary

Discovery Elementary

Endeavour Elementary

### Ina Ghangurde (हृद्दी) (मराठी)

**Family Partnership Liaison**

425-837-7008

GhangurdeI@issaquah.wednet.edu

Serving:

Liberty High School

Maywood Middle School

Apollo Elementary

Briarwood Elementary

Cougar Ridge Elementary

Grand Ridge Elementary

Maple Hills Elementary

Newcastle Elementary



# Kindergarten to High School

**COST** Tuition is free, but some activities have fees for additional offerings such as after-school programs, field trips and sports. Please ask the school secretary if your family needs financial assistance. All requests are kept completely confidential.

**ATTENDANCE** The school will contact families using a computerized message if your child has missed that day. You have to call back and explain why your child has missed school. Some excused absences are due to illness/health, family emergencies, pre-approved family trips and religious observances. If you know your child will have to miss school, communicate with the school with the following information: name of child, teacher, date(s) and the reason for their absence.

If an elementary school student has 5 or more excused absences in a single month during the current school year or 10 or more excused absences in the current school year, the District will schedule a conference with the student and their parent(s).

If a middle school or high school student has 5 unexcused absences in one month or 10 unexcused absences in a year, the District will refer the student to a community truancy board or file a petition and affidavit with the juvenile court.

**DRESS CODE** Students wear casual clothes to school; there are no uniforms. Every school has a dress code, but in general, students will be asked to dress modestly. Shoulder straps of a shirt must be at least 3 fingers wide. No low-cut shirts, body-clinging, tight clothing or clothes that display writing or pictures that are obscene or suggestive. Shorts and skirts must be at least the length of student's fingertips when hands are dropped to sides and undergarments must be completely covered.

**CURRICULUM** All grade levels and content areas use a curriculum that is aligned with the State Standards. For more information: [www.issaquah.wednet.edu/academics/curriculumstandards](http://www.issaquah.wednet.edu/academics/curriculumstandards).

**SPECIAL SERVICES** Our District has programs that serve students with disabilities from birth through twenty-one years who reside within district boundaries. For more information, visit <https://issaquah.wednet.edu/district/departments/SpecServices>.

**HOMEWORK** Elementary school kids often receive packets of homework or an individual page assigned to reinforce classroom instruction. Most teachers require daily reading as a part of homework. Homework won't be graded; it's only for practice. The teacher usually reviews the homework in class.

For middle school and high school, the amount of homework depends on the classes that they are taking. All homework is posted on teachers' websites and students write details in their planners. To make sure your students is doing homework, check the Gradebook in Family Access. In some classes, students can turn in late work, make up assignments and even retake tests if needed. If students have questions, students can email their teacher or stop by their office before or after school. Schools offer after school help for many classes. Check the website of your school for additional resources.

**COMMUNICATIONS** It's very important for you to be informed. Contact your teacher if you have questions or concerns about your child, and inform her/him about any important life events that may affect your child at school such as the birth of a sibling, divorce, death in the family, etc. You can also contact your teacher, school counselor or principal if you want to discuss academics or behavior. They have access to a phone interpreter service, if needed. The phone numbers of all teachers are listed on the school websites.

For Communications, families no longer need to sign up for E-news – they're automatically signed up with the email provided upon registering their student(s). But if you would like to sign up with an alternate email (for example, if you provided a home email to the school, but want to receive E-news at work as well), you can then sign up here: <https://issaquah.wednet.edu/news/ENews>.

There is also a lot of information on the websites of the Issaquah School District, the school and PTSA. To help your child succeed at school, students often use teacher websites to check homework, or send assignments. Teachers also post syllabus information (expectations for class, tests and homework), calendar, and contact information on their websites.

In elementary school, it's very important to attend Curriculum Night at the beginning of the school year and also attend Parent Teacher conferences, a meeting with the teacher of your child. Your school will give you the details. Every day check your student's backpack since teachers send forms and information to parents with kids.

In middle school or high school there are not parent conferences, but you can always request a meeting. Contact a teacher to discuss your child's progress or if you are worried about grades. For social, behavioral or emotional concerns, email or call the school counselor. Phone interpreters are available.

**STATE TESTS** Student progress is carefully monitored through state testing of the Common Core Standards. However, these assessments are not part of your child's grade. More information can be found at: <https://www.issaquah.wednet.edu/academics/assessment>.

Kindergarten	Washington Kindergarten Inventory of Developing Skills (WaKIDS)
Grades 3th to 8th, and 10th to 12th	Smarter Balanced Assessment (SBA)
Grades 5th, 8th, 11th	Washington Comprehensive Assessment in Science (WCAS)
Grade 12th	End-of-course (EOC)
Grade K-12th	English Language Proficiency Assessment for the 21st Century (ELPA 21)



**BUS** Bus stop and route information will be available online in mid-August.  
<https://www.issaquah.wednet.edu/family/transportation/elink>.

Students are required to arrive at their bus stop five minutes prior to pick-up time. Pick-up times may change during the school year; parents will be notified. Parents are responsible for their children prior to pick-up and after drop-off. Drivers do not allow parents or any other person to board the bus.

Students are expected to behave properly and safely on the bus and at bus stops, and to comply with the driver's directions. Disciplinary rules are enforced on buses in the same manner as on school campuses, and video cameras are installed to assist staff in maintaining discipline. A complete list of bus rules can be found here: <http://www.issaquah.wednet.edu/family/transportation>.

Students may ride on other buses or get off at a different stop on a space available basis with a written request from the parent to the school. A bus pass must be obtained from the school office at least a half-hour before school is dismissed. Students will be dropped off only at authorized bus stops. Kindergarten students must be released to their parent or guardian unless there is a "Release Form" signed by the parent. If you have any questions or concerns regarding a particular bus route, bus stop or bus driver or if you wish to speak with someone regarding student bus behavior, you may contact the Transportation Department at 425-837-6330.

**LUNCH** Food is available for purchase from the kitchen every school day. Lunch costs approximately \$4.00 and milk is \$0.50. Students are assigned a lunch account to pay for their meals. They will need to remember a PIN to type on the keypad at the cash register during lunch serving times. Deposits may be made directly through the school office or the cashier in the kitchen. For your convenience, online payments may also be made by visiting [www.myschoolbucks.com](http://www.myschoolbucks.com). Parents may select an auto-pay option as well by visiting the website.

Menus and nutritional data are posted before the end of each month for the following month:  
<https://www.issaquah.wednet.edu/family/lunch>.

Students can also bring their lunch from home. For financial assistance, applications are available at any time during the school year:

[https://issaquah.strataapps.com/\(S\(sorh1e2iwo3bn3ximo2lojcz\)\)/default.aspx](https://issaquah.strataapps.com/(S(sorh1e2iwo3bn3ximo2lojcz))/default.aspx).

**LOST & FOUND** Schools are not responsible for any lost items. However, there are assigned places where all misplaced items are collected. If students are missing something, they can look for it at the Lost & Found location in their school. A couple of times throughout the year, unclaimed items are donated to local charities.

**COUNSELORS** Each school has Counseling Services. All students have access to and the right to participate in the school guidance and counseling program. The counseling program is based on specified goals and developmental student competencies for all students in support of student achievement. It is planned and coordinated by school counseling teams with consideration of other school, parent or guardian and community representatives. There are many programs and services for child abuse, crisis intervention, families with financial needs, homelessness, mental services and special accommodations due to disability, etc. More information can be found at: <https://www.issaquah.wednet.edu/family/career>.

**ASB Associated Student Body** Every middle school and high school has an ASB organization of students. Principals designate a staff member as the primary advisor to the ASB organization. During the school year, they have fundraising activities to raise money for clubs, sports, dances, etc.

The ASB organization of each school has cards they sell to students in order for them to participate in sports, music groups, and events. Cards cost between \$35 to \$55. There is financial assistance available for students that qualify.

**IDENTIFICATION CARDS** Middle schools and high schools provide identification cards to students with their name, grade and a photo. Students are expected to carry their card at all times during the school day and at school activities.

**CLUBS** Schools offer a variety of after school clubs at no cost. Check the school's website to see what clubs are at the school and the dates the clubs meet.

**SPORTS** Schools offer a variety of sports for students each year. They will be asked to have an ASB (Associated Student Body) card in order to participate in a sport. Practices are held after school and students can take the activity bus home afterward.

**MUSIC** Schools offer students an opportunity to participate in music programs and productions throughout the year that includes concert band, jazz band, orchestra, choir, etc. Check the website of your school for details.

**LOCKERS** Middle school and high school students will be assigned a locker to store books, school supplies, winter and sport gear during the day. Some students may have to share lockers.

**ELECTRONIC DEVICES** Each school has an Electronic Device User Agreement. Students and parents will be asked to review and sign.

**BELL SCHEDULES** For a bell schedule by school and program for the 2019-2020 school year, please visit <https://www.issaquah.wednet.edu/district/bell-schedules>.

**ELL English Language Learners** If you notify the school that your child speaks any language other than English, your student will be given an English Language Placement Test. This is a short test given by school staff where your child's listening, speaking, reading and writing skills are tested.

A letter with the results will be sent to parents. The Placement Test will place students at one of these levels: Emerging, Progressing or Proficient. Emerging and Progressing ELL students will be eligible for ELL instruction. Proficient students are not eligible but will qualify for extra academic support if needed for two years after transitioning from active ELL services.

**Elementary ELL model:** The "Supportive Mainstream" model is used in our elementary schools. In this model, students spend their day in a regular classroom. Many of the classroom and ELL teachers are trained in Project GLAD (Guided Language Acquisition Design). As the basis for service, ELL certificated teachers and paraprofessionals come into the classroom to help students develop academic language, and/or provide other interventions as needed, to be successful in their class.

**Middle School ELL model:** A certified teacher leads the English Language Development (ELD) class for ELL students. This class works to build student proficiency in academic language, helping students access the core curriculum throughout the rest of their day. These classes focus on oral language development, explicit instruction in the structure of the English language and academic language development through reading, writing, speaking and listening. They may also support the student in their core classroom work. Some middle schools also provide after-school support for ELL students. This class takes the place of an elective. So, if a student is taking an ELL class, they won't have the opportunity to do music.

**High School ELL model:** A certified teacher leads an English Language Development class for ELL students. This class works to build student proficiency in academic language helping students access the core curriculum throughout the rest of their day. These classes focus on oral language development, explicit instruction in the structure of the English language and academic language development through reading, writing, speaking and listening. They may also support the student in their core classroom work. Some high schools also provide after-school support so that students can receive extra help with academics and language learning.

Once a year, the students take an online test in February or March called the ELPA 21 Test; the results will show their language growth and current ELL Level. If a student scores Proficient they will exit the ELL Program.

To see a Family Guide to ELPA21 (in English and Spanish), click here: <http://www.k12.wa.us/ELPA21/Timeline.aspx>. To see sample test items, use Google Chrome and the following web address: <http://www.elpa21.org/assessment-system/sample-items>.

More than 1,200 students receive ELL services in the Issaquah School District. For more information, please contact the ELL office at 425-837-7093.



TERM	DEFINITION
accommodation	A change made to a student's academic plan or daily schedule that helps the student learn better.
chaperone	A person who accompanies or looks after a group of students on a field trip or sporting event.
<b>CCSS</b> Common Core State Standards	A common set of national goals for K-12 students in Math and English Language Arts. These goals help prepare students for college and careers.
extracurricular	Activities outside the school day that are sponsored by the school. These activities may cost money.
fundraiser	An opportunity for the school to raise money for additional programs, such as sports, art, music and supplies.
highly capable student	A student who typically scores in the top 3 -5% on both cognitive and achievement tests. Scores are typically at the 97th percentile or above.
<b>IEPs</b> Individual Education Programs	These are written educational plans that are developed at least annually, for students who have a disability.
<b>LRC</b> Learning Resource Classroom	A classroom where special education students receive instruction from a Special Education Teacher. Students may be in this class for part or all of the day, depending on their IEP.
<b>NGSS</b> Next Generation Science Standards	A common set of national goals for K-12 students in science and engineering. These goals help prepare students for college and careers.
<b>PE</b> Physical Education	A class where students work on physical fitness.
<b>PTSA / PTA</b> Parent Teacher (Student) Association	A parent organization that supports students and families to ensure success in education.
special education	Specially designed instruction provided to a student who has a disability.
<b>VOICE Mentors</b>	Volunteer that mentor students in academic, social or life skills.

**NATIONAL (JUNIOR) HONOR SOCIETY** An organization that recognizes and encourages academic achievement while also developing other characteristics essential to citizens in a democracy.

In order to join their school chapter, students are requested to have a certain accumulative grade point average (GPA) after the first trimester of 7th grade. To maintain membership, students will have to complete eight hours of community service and attend meetings. Members will have the option of doing this activity until High School when it's called National Honor Society.

# HOW ARE SCHOOLS FUNDED? AND HOW CAN YOU HELP SUPPORT YOUR CHILD'S EDUCATION?

## TAXES & STATE FUNDING

Public education funding is a very complicated system. Schools receive funding from the federal government, state government, and local tax levies and bonds.

The majority of the District's operating budget comes from the state and is based on a school district's enrollment, a per-pupil basis.

The District uses the operations budget to fund all programs, services, textbooks, materials, and salaries. In short, everything needed to run the District day to day. However, this does not fully cover the cost of a modern education.

Districts are allowed to ask voters for levies and bonds to fund extras. Local voters approve levies and bonds every two to four years.

The District relies on these levies and bonds to cover the gap between what the state provides and the actual cost of high quality education. In their funding formulas, state and federal governments provide little or no resources to pay for school construction, repairs, educational technology, school bus purchases, substitute teachers, or school nurses, to name a few.



## BONDS & LEVIES

To pay for these additional school expenses, the state allows school districts to run levies and bonds, asking local taxpayers to fund specific items. Without voter supported levies and bonds, our school district must use its operations budget - dollars meant to pay for classroom operations - to cover the costs of needed resources, thus reducing class dollars.

**School bonds** provide funding for **buildings**: new construction, renovations, or modernization of facilities – to ensure students learn in safe, secure, efficient buildings.

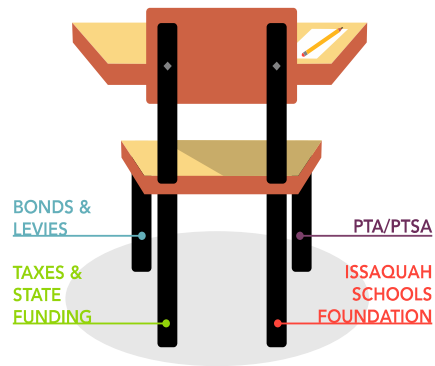
**School levies** provide funding for **learning**: substitute teachers, school nurses, supplemental education programs, technology, mental health counseling, resource officers, clubs-sports-activities, transportation costs, critical repairs, and much more.

**If you are eligible, VOTE!** And if you are not, help with the campaigns and explain to other families why this is so important.

For more details, visit [visvote.org](http://visvote.org).



## Issaquah Students' Success Relies on the Stability of These Four Key Partners in Education



### ISSAQUAH SCHOOLS FOUNDATION

At the Issaquah Schools Foundation, we fuel success for all 20,500 students at all 24 schools, funding the gap between what the District provides and what is needed for the highest quality educational experience.

But, at the heart of the Foundation is YOU.

Your support fuels vital programs including homework help, art instruction, STEM clubs, robotics, Tools4School backpacks and supplies, snack and lunch support, and teacher grants.

This magazine is only one example of the programs that the Foundation makes possible.

Cultural Bridges serves as a bridge of communication between the Issaquah School District and parents who are culturally and/or linguistically diverse.

As a donor to the Issaquah Schools Foundation, you are fueling success for every student at every school.

To donate and learn more, **go to page 3, call 425-391-8557 or visit [www.isfdn.org](http://www.isfdn.org).**



### PTA/PTSA

Every school in our District has a PTA/PTSA. PTA/PTSA presidents and principals meet regularly and the PTA/PTSA continually supports school activities.

PTAs/PTSAs have delegates that attend the WSPTA Legislative Assembly and vote for resolutions and legislative issues. In 2019, these items covered Social Emotional Learning, Preventing Gun Violence, and School Construction to name a few.

The PTA/PTSA offers meaningful volunteer opportunities within the school community.

The PTA/PTSA supports students, staff and parents creating fundraising events like fun runs, auctions, book fairs, and bake sales. With these funds, the PTA/PTSA provides art supplies, laptops, teacher stipends, field trips, library books, playground equipment, recess activities, STEM and cultural programs, school assemblies, reading clubs, events, and more.

To truly advocate and give a voice to every student, our PTA/PTSA membership must be as diverse as our communities. Our children need YOUR voice. PTA/PTSA needs YOU to ensure that all children are represented. **Contact your PTA/PTSA, be an annual member, volunteer in their activities and participate in their fundraising events!**







# 2019-2020 District Calendar

M	T	W	Th	F
SEPTEMBER				
2	3	4	5	6
9	10	11	12	13
16	17	18	19	20
23	24	25	26	27
30				

OCTOBER				
	1	2	3	4
7	8	9	10	11
14	15	16	17	18
21	22	23	24	25
28	29	30	31	

NOVEMBER				
				1
4	5	6	7	8
11	12	13	14	15
18	19	20	21	22
25	26	27	28	29

DECEMBER				
2	3	4	5	6
9	10	11	12	13
16	17	18	19	20
23	24	25	26	27
30	31			

JANUARY				
		1	2	3
6	7	8	9	10
13	14	15	16	17
20	21	22	23	24
27	28	29	30	31

- Sept 2:** **Labor Day**  
*No school for students or staff*
- Sept 4:** **First day of school for students (grades 1-12)**
- Sept 9:** **First day of school for Kindergarten students**
- Oct 14:** **Teacher Work Day**  
*No school for students*
- Nov 11:** **Veterans Day Observance**  
*No school for students or staff*
- Nov 28-29:** **Thanksgiving holiday**  
*No school for students or staff*
- Dec 4-5:** **Elementary Conference**
- Dec 23-Jan 3:** **First Winter Break**  
*No school for students or staff*
- Jan 20:** **Martin Luther King Jr. Day**  
*No school for students or staff*
- Jan 27:** **Teacher Work Day**  
*No school for students*
- Feb 17:** **Presidents Day**
- Feb 18 - 21:** **Second Winter Break**  
*No school for students or staff*
- Apr 13- 17:** **Spring Break**  
*No school for students or staff*
- May 25:** **Memorial Day**  
*No school for students or staff*
- June 18:** **Last day of school for students**

## WEATHER MAKE-UP DAYS

*If school is closed during the school year due to inclement weather, June 19th will be the first make up day. Additional school days will be added to the school calendar in June as needed.*

M	T	W	Th	F
FEBRUARY				
3	4	5	6	7
10	11	12	13	14
17	18	19	20	21
24	25	26	27	28

MARCH				
2	3	4	5	6
9	10	11	12	13
16	17	18	19	20
23	24	25	26	27
30	31			

APRIL				
		1	2	3
6	7	8	9	10
13	14	15	16	17
20	21	22	23	24
27	28	29	30	

MAY				
				1
4	5	6	7	8
11	12	13	14	15
18	19	20	21	22
25	26	27	28	29

JUNE				
1	2	3	4	5
8	9	10	11	12
15	16	17	18**	19
22	23	24	25	26
29	30			

2019-20 school calendar  
6/5/19 Update

## CITIES

The Issaquah School District includes schools in the cities of Issaquah, Bellevue, Newcastle, Renton and Sammamish. All of these cities offer wonderful events, free classes, and many services. Check their websites for more information!

# Family Events 2019-2020

The District organizes these events in collaboration with Cultural Bridges. The locations vary but all families with students in the District are welcome to attend.

If you would like to participate helping at any of these events, contact Marisol Visser at: [marisol@isfdn.org](mailto:marisol@isfdn.org).

Chinese and Spanish interpreters are available at all events. If you need an interpreter in another language for a specific event, contact Lorna Gilmour at: [gilmourl@issaquah.wednet.edu](mailto:gilmourl@issaquah.wednet.edu).

## August

### Ready for School Fair

August 12 - Maywood Middle School – 9 am to 12 pm

August 12 - Clark Elementary School – 3 to 7 pm

Online Verification Process support for ALL incoming families for ISD students K-12. Parent volunteers and district staff will support families completing the online forms for enrollment verification.

\*Tools4Schools by ISF at same locations and times.

## September

### Family Access Help (two sessions)

September 25 - Maywood – 6:30 to 8:30 pm

September 26 - Clark – 6:30 to 8:30 pm

Support families that need help using and navigating Family Access. Family Access is an online system for schools to communicate directly with families regarding their students.

## October

### What Every Parent Wants to Know About the Issaquah School District

October 23 - Location TBD – 6:30 to 8:30 pm

Separate sessions for elementary, middle and high school information.

School and classroom expectations, behavior expectations, grading, homework, communications with school and teachers, how to get involved, course selection information and Family Access.

## November

### Communicating with Teachers at Parent-Teacher Conferences

November 6 - Location TBD – 6:30 to 8:30 pm

Parent-teacher conferences, contacting schools, norms, expectations for parent-teacher communications.

## January

### Welcome to the ISD for Incoming Kindergarten Parents

January 29 - Location TBD – 6:30 to 8:30 pm

What Kindergarten looks like in the ISD, age of students entering Kindergarten, preparedness, transportation, lunch, costs/fees, hours, health and immunization requirements).

## February

### 5th grade Transition to Middle School Information Night

February 26 - IMS Library – 6:30 to 8:00 pm

Course selection information, elective class options such as orchestra and choir, PE/Health classes, sports, clubs, health/immunization, costs/fees, supplies.

## March

### What Every Parent Wants to Know About the Issaquah School District – Part 2

March 25 - Location TBD – 6:30 to 8:00 pm

Special Services including 504 and IEPs, role of counselors, curriculum information and adoption process, how to join district committees, PTSA and ISF.

## Kindergarten

The Issaquah School District offers Full Day Kindergarten at no cost for all students. A half-day, morning kindergarten option is also available for families. Half-day kindergarten students may still ride the bus in the morning. However, if parents or guardians choose the half-day morning session, they are responsible for picking their child up at the end of the three-hour, half day. The kindergarten registration window begins in early February and ends in March. Registration takes place at your neighborhood school.

If you don't know which school your child will attend next year, the Transportation Department can help. Call 425-837-6310 or enter your home address into the Transportation Department's E-Link system to find your school: <https://issaquah.wednet.edu/family/transportation/elink>.

New for the 2019-2020 school year, the Issaquah School District opened its first Spanish-English Dual Language Immersion Program. The program is housed at Clark and Issaquah Valley Elementary (IVE) with the intent to serve students in these two school's attendance areas. For more information about this program, contact Clark or IVE directly.

## Kindergarten Readiness

Children grow and develop in different ways and at different speeds. Your child may have more or less skills in the outlined areas. Use this document as a guide to create opportunities for students to learn and grow!

<p>Speaks clearly so others can understand their words. Takes turns in a conversation. Follows multi-step directions.</p>	<p>Is curious about new things or ideas. Generates ideas to solve a problem. Sorts objects by different features. Remembers and retells a family experience.</p>
<p>Plays well with other children. Shares with others and is able to take turns. Lets an adult know if they need help. Uses words to solve differences with peers.</p>	<p>Holds and uses a pencil with a proper grip. Can walk, run and jump. Goes to the bathroom without help. Washes hands after going to the bathroom. Puts on his or her own coat and shoes.</p>
<p>Knows letters and numbers are different. Names many letters of the alphabet. Makes many of the letter sounds. Produces rhyming words. Enjoys books and being read to. Holds a book properly. Writes most of the letters in their name. Understands letters can be made into words. Knows that words are a way that we can communicate with others.</p>	<p>Counts the number of items in a group. Counts out loud, in order, to 10 or more. Uses words like "all" and "some" to describe an amount of items.</p> <p><b>If you have concerns about your child's readiness for Kindergarten, talk to your preschool teacher, pediatrician or contact Child Find at 425-837-7197.</b></p>



## Elementary

Grades 1st to 5th are considered elementary education and the Issaquah School District has 15 elementary schools.

**SCHEDULE** There is one teacher per classroom who teaches the majority of the subjects to the whole class, in small groups or one-on-one. Other adults, such as paraprofessionals or parent volunteers, may also work with students. Students will spend the majority of their day in their classrooms. For music, physical education and library, students go to other classrooms and have other teachers. Teachers post their weekly schedule on their websites. Regularly students have 20 minutes for lunch and 2 recesses of 20 minutes each day, with the exception of Wednesdays. Classmates change each grade level, and students have different teachers each year.

**BEHAVIOR** Kids are asked to walk inside the school, to not raise their voice level and to respect the personal space of each student, or "space bubble." At recess, they will be asked to keep their hands to themselves and to not play roughly. In class, students will need to raise their hand to talk. Students participate actively in classrooms; this is recorded on their report card under "behaviors that promote learning."

**CELEBRATIONS** Schools organize a lot of special days for students, such as pajama day, crazy hair day, etc. These are called Spirit Days. Teachers will let you know about these events. If you have questions about the holidays your family celebrates, talk to your teacher. Schools encourage children to be sensitive to the needs and feelings of others. Parents are asked not to send birthday or other party invitations to school, especially when all children in a classroom are not included. In some schools, birthdays are celebrated once a month. Ask your child's teacher for the procedure regarding classroom birthday celebrations.

**VISITING** Parents are welcome to visit their child's classroom. However, please contact the teacher to schedule a specific visitation time. Parents are also welcome to visit students during lunchtime. Ask your school for regulations. All visitors must sign in at the school office and are required to wear a visitor badge at all times.

**VOLUNTEERING** Once a person has completed the District's background check and volunteer application form, schools welcome all families to volunteer in the office, classrooms, the library or health room. Volunteers help the PTSA to support art docent programs, and other enrichment activities in schools. All volunteers must complete an on-line background check application: <https://issaquahvolunteers.hrmplus.net>. Note that your volunteer approval lasts for one school year only.

Volunteers make a big difference at schools. All family members are welcome to volunteer. Kids love to see parents, grandparents and caretakers volunteering in their classrooms, recess and events!

**GRADES** Report cards are not mailed or sent home. Parents need to go to Family Access to view and download them. There is not a ranking system in the US, and grades in elementary school don't count towards college.

Teachers use pre-tests and post-tests to track student growth. Pre-tests are given before a unit, so teachers can see what students already know.

Teachers use daily assignments and tests to provide grades for report cards. Students are graded based on Washington State standards, and report cards each trimester reflect student's progress towards the end-of-year standards for Behavior that Promote Learning and Academic Performance:

- Level 4: Exceeds Standard
- Level 3: Meets Standard
- Level 2: Approaches Standard
- Level 1: Well-below Standard

Level 2 and 3 are the most common grades. Celebrate the 3's! For more information (in English, Spanish, Chinese and Korean), visit <https://issaquah.wednet.edu/academics/fieldtest>.

**PBSES Positive Behavior Social and Emotional Support** The District's vision statement for PBSES is to promote respect, positive relationships, and predictable, proactive learning environments so that students can lead socially and emotionally safe and healthy lives. More information can be found here: <https://issaquah.wednet.edu/academics/programs/pbres>.

**HIGHLY CAPABLE PROGRAM** The Issaquah School District's Highly Capable Program provides a continuum of services to eligible students in grades K-12. Testing is required for eligibility. PEP is the program for Kindergarten to 2nd grade. MERLIN and SAGE for 3rd to 5th, and Secondary for 6th to 12th. To see the descriptions of these programs and more information, go to <https://www.issaquah.wednet.edu/academics/programs/gifted>.

**SCIENCE-TECHNOLOGY PROGRAMS** There are some choice programs with extra emphasis on science and technology for 4th and 5th graders. These programs are located at Briarwood, Cascade Ridge and Clark, but all students can apply. When students are in 3rd grade, they will be selected by a lottery in April. There are parent information sessions in February and March. Attendance is required to apply. Parents will need to provide transportation for their child if the school is not their assigned home school. For more information, go to: [www.issaquah.wednet.edu/academics/programs/ScienceTech](http://www.issaquah.wednet.edu/academics/programs/ScienceTech).

**FIELD TRIPS** Permission slips are sent home with your child prior to a field trip and must be returned before your child can be transported off school grounds. If you do not wish your child to participate in a particular field trip, alternative activities will be arranged.

**HEALTH** Parents will be asked to pick up their child if a health problem occurs. A student with an oral temperature of 100° or over should remain at home until free of fever for 24 hours. A school nurse is available for consultation and may be contacted through the school office.

**LASER PENS/POINTERS** Because of the potential for serious injury to the eyes, students are not allowed to bring or use laser pens/pointers on school grounds or buses. Every school has their own rules, but other things that are not commonly welcome at schools are cellphones, hoverboards, heelys, hats, and gum.

**PETS/ANIMALS** The District has implemented a no pet regulation. Pets should not be brought to school unless all District regulations and procedures have been followed. Please check with your building administrator for approval and necessary forms.

**PHOTOGRAPHY** Professional photographers visit each school to take individual and class pictures. Students, however, are not required to purchase photographs. Information, including cost/package options, is sent home prior to the photographer's visit. A portion of the profit is returned to each school's PTSA.

**SAFETY** Safety drills are held monthly. Safety drills such as fire, earthquake, shelter in place, and lockdown drills are practiced to help familiarize students and staff with the procedures to follow should a real emergency occur.

**BEFORE AND AFTER SCHOOL** Parents are requested to deliver students to school no earlier than 10 minutes before classes begin. If your student walks to school or if you drive your child, please be sure you are supervising them until 10 minutes before classes begin.

At the end of the day, students who have not been picked up 15 minutes after the school day ends will be brought to the school office and parents will be contacted. Because supervision is not provided before or after school, students are not allowed on the playground and must wait in a supervised area. Parents must come to the office to pick up their child.

**LEAVING EARLY** If a child must leave school before dismissal, parents are required to stop in the office and sign their student out. Students will then be called from the classroom by the office. Please do not go to the classroom. If your child leaves school with less than 2 hours left in the school day, the dismissal is recorded as a tardy.

**5TH GRADE** In the last year of elementary education, schools have special activities for the students. One of these activities is going to camp. Students spend three days participating in hands-on lessons that compliment their science and social curriculum. They also enjoy dancing, canoing, crafts and campfire songs. The last assembly of the school year is very special for 5th graders, since they get to celebrate the completion of elementary school with all the students. Later, they get to do the same with their families during the Promotion (it's not called Graduation).

## Middle School

Grades 6th to 8th are considered middle school education and the Issaquah School District has 5 middle schools.

**COURSE SELECTION** In March, students are asked to choose the classes for the following year. They will get information packets and parents will help select the courses in Student Access.

Students are required to take a full year of Language Arts, Social Studies, Math and Science at each grade level, these are called Core classes. Advanced and accelerated options are available to students in Language Arts, Math and Science and placement in these courses is done using an informed self-select model. Information can be found in your student's course selection packet and on the District website. There are some additional required classes like Health and PE (Physical Education) and Tech Smart (6th grade only). And there are elective courses such as Chorus, Band, Orchestra, Spanish, etc.

**SCHEDULE** Students move to different classrooms for each subject, and they have different teachers. Classes are between 50 to 55 minutes long and are called "a period." There are 6 to 7 periods daily. They have a 30 minutes lunch and no recess.

**GRADES** Teachers use letter grading: A, A-, B+, B, B-, C+, C, C-, D+, D, F (D is passing and F is failing). It's important to read the Syllabus from each teacher to understand grading expectations. Middle school students receive 3 official trimester report cards each year. Parents can check their students' grades through Family Access. There is not a ranking system in the US.

**HIGH SCHOOL CREDIT** All middle school 7th and 8th grade students who complete high school credit courses are eligible to have those grades and credits placed on their high school transcript. A request can be made to add the credit and grade at any time up to the point of the student's junior year credit review with his/her counselor. Please note that once the grades are added to the high school transcript, the grade and credit cannot be removed and will permanently be included in the computation of the student's grade point average.

**TESTS** There are class, District and State tests. For class tests, teachers write the tests based on curriculum. Students have these tests several times during the trimester. For District tests, students will be asked to take a pre-assessments test before the trimester and a post-assessment after a unit or trimester. For State tests, see page 7.

**PROMOTION** Students in grades 6th, 7th, and 8th who receive passing grades in at least eleven of their twelve trimester common core courses will be promoted to the next grade level. Students with more than one failure in Language Arts, Social Studies or Math are recommended to make up the course in the District's in-person Middle School Summer Program. The middle school principal will formally notify the parent(s) or guardian(s) of the students who are to be retained by the last day of school.

## High School

Grades 9th to 12th are considered high school education and the Issaquah School District has 4 high schools. Students in 9th grade are called freshman; in 10th grade, sophomore; in 11th grade, junior; and in the 12th grade, senior.

**GRADUATION REQUIREMENTS** To graduate from high school, students must meet four requirements: (1) earn the required number of credits; (2) pass state assessments or approved alternatives; (3) develop a High School and Beyond Plan; and (4) demonstrate technology proficiency.

1) Credits: The state requires students to earn a minimum of 24 credits in specified subject areas to graduate from high school. For Issaquah High School (IHS), Skyline High School (SHS), and Liberty High School (LHS), the District has established the following credit and course requirements for graduation:

SUBJECT AREA	IHS/SHS	LHS (2019)	LHS (2020-22)	LHS (2023+)
English	4	4	4	4
Mathematics	3	3	3	3
Social Studies	3	4	3	3
Science	3	3	3	3
Career & Technical Education	1	1	1	1
Fitness/Physical Education	1.5	2	1.5	1.5
Health	.5	.5	.5	.5
Arts/Personal Pathway	2	2	2	2
World Langs./Pers. Pathway	2	2	2	2
Electives	4	8	8	7
<b>Total Credits</b>	<b>24</b>	<b>29.5</b>	<b>28</b>	<b>27</b>

2) Assessments: Students must earn either a certificate of academic achievement (CAA) or certificate of individual achievement (CIA) in order to graduate. Students earn a CAA or CIA by passing state exams or state-approved alternatives.

3) High School and Beyond Plans: Every student must develop a High School and Beyond Plan to guide the student's high school experience, including plans for postsecondary education or training and career. Students shall create their High School and Beyond Plans in cooperation with parents and school staff.

4) Technology Requirement: The District requires that all students demonstrate technology proficiency. This is accomplished by successfully completing an approved technology course in high school or middle school or passing the technology proficiency test. Information on the test can be found on the District's website. Successful passage of the technology proficiency test does not result in earning credit.

**GRADES** Teachers use letter grading: A, A-, B+, B, B-, C+, C, C-, D+, D, F (D is passing and F is failing). It's important to read the Syllabus from each teacher to understand grading expectations. High schools students get their grades after each semester. Parents (and students) can check their grades through Family Access. There is not a ranking system in the US. Colleges and employers look at high school transcripts listing all high school grades, courses and the student's cumulative grade point average (GPA).



**AP Advanced Placement** At Liberty and Issaquah high schools, students can take these college-level classes. Students may receive college credit, depending on their test score and the college they attend.

**IB International Baccalaureate** This is a Diploma Program that students in Skyline High School can obtain. It's a pre-university course of study for grades 11 to 12 based on international standards. During their sophomore year, students will be asked to sign a contract outlining their classes for 11th and 12th grade. This Diploma is recognized by many universities worldwide.

**RUNNING START** All high school students can choose to take certain classes online. Students in grades 11th and 12th can attend a community college and earn college and high school credit at the same time.

**TRANSCRIPT** This is an official record of a student's grades for high school level classes. Colleges and employers only look at high school transcripts (not middle school or elementary report cards).

**WORLD LANGUAGE CREDIT** Students can get a World Language Credit if they take tests and meet scoring requirements. This is a great way for bilingual/ ELL students to get credit for fluency in their first language. Ask your high school counselor for details.

**COLLEGE AND CAREER CENTER** Schools have excellent resources for students and parents who need information about post-secondary education and career decisions like financial aid, part-time jobs, volunteer opportunities, etc. Look for all this information on the school's website.

**DANCES** Schools organize optional dances for students. Homecoming is during the fall. Although it is a formal event, girls usually wear short dresses. This event is linked to a football game. TOLO is a spring dance where traditionally the girls ask the boys to go as their date. And there is always a fun theme, so students wear costumes. In addition, at the end of the school year, schools organize the Prom, a very formal event, where girls wear long dresses and boys wear tuxedos.

**DRUG FREE ZONES** Schools in the Issaquah School District are protected as drug free zones, as established by the City of Issaquah and King County. Drug free zones provide for possible double penalties for anyone caught trafficking controlled substances within 1,000 feet of a designated school, school bus stop or public park.

**HARASSMENT, INTIMIDATION, AND BULLYING** If a student feels that he or she is being harassed, intimidated, or bullied because of race, creed, color, national origin, ancestry, gender, sexual orientation, or disability, the student should immediately report such incidents to a teacher, counselor, or building administrator. A complete copy of Regulation #3207 may be obtained at any school or on the District website at [www.issaquah.wednet.edu](http://www.issaquah.wednet.edu).

**GIBSON EK HIGH SCHOOL** This is the District's newest high school that opened its doors in September 2016. This school uses a Big Picture Learning model that encourages to use "out of the box" methods of learning. At Gibson Ek, students learn through projects that have been carefully chosen instead of attending classes like ones at a regular high school. New learning methods work better for some people. If you have questions or want to learn more about the school, visit [www.gibsonek.org](http://www.gibsonek.org).

## Resources for Families

### Support for Food, Clothes & Supplies

**Scholarships for PSAT/SAT/AP/ASB/World Language Credit/Homecoming/Graduation Night, etc.** are provided at the High School level. Ask the bookkeeper at your school for more information.

**Snack Program** at every school offering small breakfast and/or snack options – check with your nurse, teacher or school counselor.

#### **Free and Reduced Price Lunch Sign-up**

<http://www.issaquah.wednet.edu/district/departments/operations/foodservice>. Assistance may be available for families who do not qualify but still have financial need. Call 425-837-5060 for details.

**Lunch for the Breaks, Summer Lunch Program and Weekend PowerPacks** - please check with the Issaquah Food and Clothing Bank: <https://www.issaquahfoodbank.org/special-programs/> or call 425-392-4123 ext. 16.

**Clothing Closets** at each high school can provide students with new or gently used articles of clothing. Talk to your student's counselor or ask about it at the front office. The Issaquah Food and Clothing Bank also provides clothing for students: <https://issaquahfoodbank.org/>.

**Backpacks and School Supplies (Tools for Schools)** Register for Tools4School in the spring/summer to receive a free backpack and school supplies in August. Registration and other details are posted at: [www.isfdn.org/tools4school](http://www.isfdn.org/tools4school). Backpacks and supplies are also available at every school year-round.

**Band Instruments for Loan** – Most middle and high schools have band instruments for free or a reduced rental cost. Talk to your school's band teacher.

### Support for Academics

**After-School Open Library** is available for every middle school student. Work on homework, use the computer, or take a make-up test then ride the free activity bus home. Check the school's website for the schedule.

**After-School Tutoring** is available for free at every high school. Check the school's website for the schedule. Transportation to home is provided on the free Homework Bus.

**Mentor for Your Student** – the District VOICE Mentor Program may be able to provide a one-on-one mentor for your student. Talk to your school's counselor or teacher to see if they qualify.

### Other Support

#### **Before/After-School Care (BASC) Program**

**Financial Aid (K-8)** may be available for Issaquah School District's BASC Program. Call 425-837-5080 to request an application.

**Translation for Transcripts** – The Issaquah Schools Foundation's Cultural Bridges Program can help with transcript translations. Contact [culturalbridges@isfdn.org](mailto:culturalbridges@isfdn.org) for assistance.

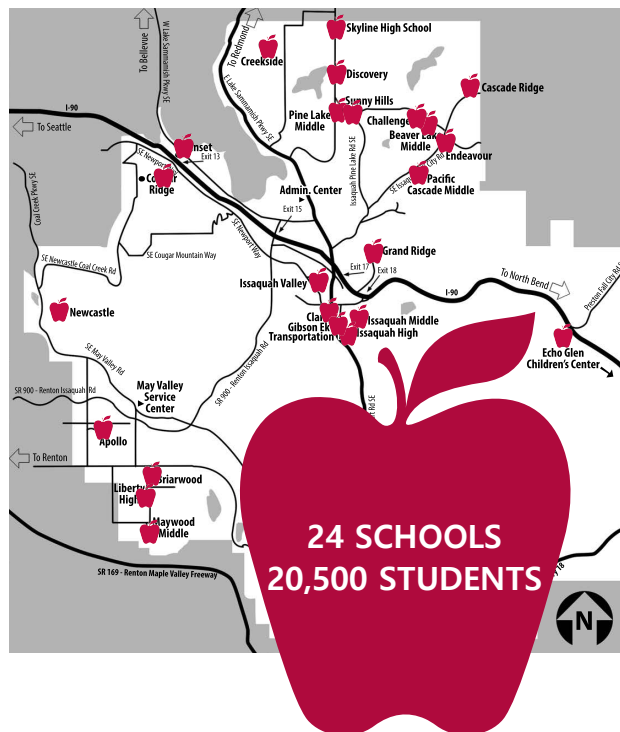
**Vision Checks** are done annually at school. Any student needing further vision help or eyeglasses should contact their school nurse to access low and no cost optometrist appointment and glasses.

# Fueling Success for Every Student, Every School.

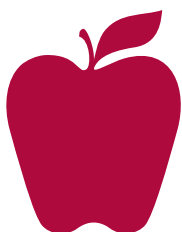
The Issaquah Schools Foundation is a non-profit fundraising and friend-raising organization that supports students in the Issaquah School District which covers a span of 110 square miles and seven municipalities including Issaquah, Sammamish, Bellevue, Newcastle and Renton. We work closely with the Issaquah School District to fund programs like these that open doors to opportunities:

- After School Homework Help
- STEM/Robotics Clubs
- Band, Choir & Artistic Support
- Cultural Bridges Parent & Student Resources
- Art Education & Support
- Backpacks & School Supplies
- Food & Snack Aid
- Parent Education & Teacher Grants

The path to success is unique for every student. Please join us in helping every student succeed in every school.



## DONATE • VOLUNTEER



ISSAQUAH  
SCHOOLS  
FOUNDATION

To learn more, visit [isfdn.org](http://isfdn.org)  
or contact us at 425.391.8557

