

FY2023

September 1, 2022 - August 31, 2023



ISSAQUAH
SCHOOLS
FOUNDATION

IMPACT REPORT

We create limitless opportunities that inspire students on their personal path to success.



Our Impact

- 19,500+ Students
- 27 Schools
- 110 Square Miles
- Issaquah, Sammamish, Bellevue, Renton, Newcastle, Unincorporated King County

Visit us online to learn more:
isfdn.org/impact.

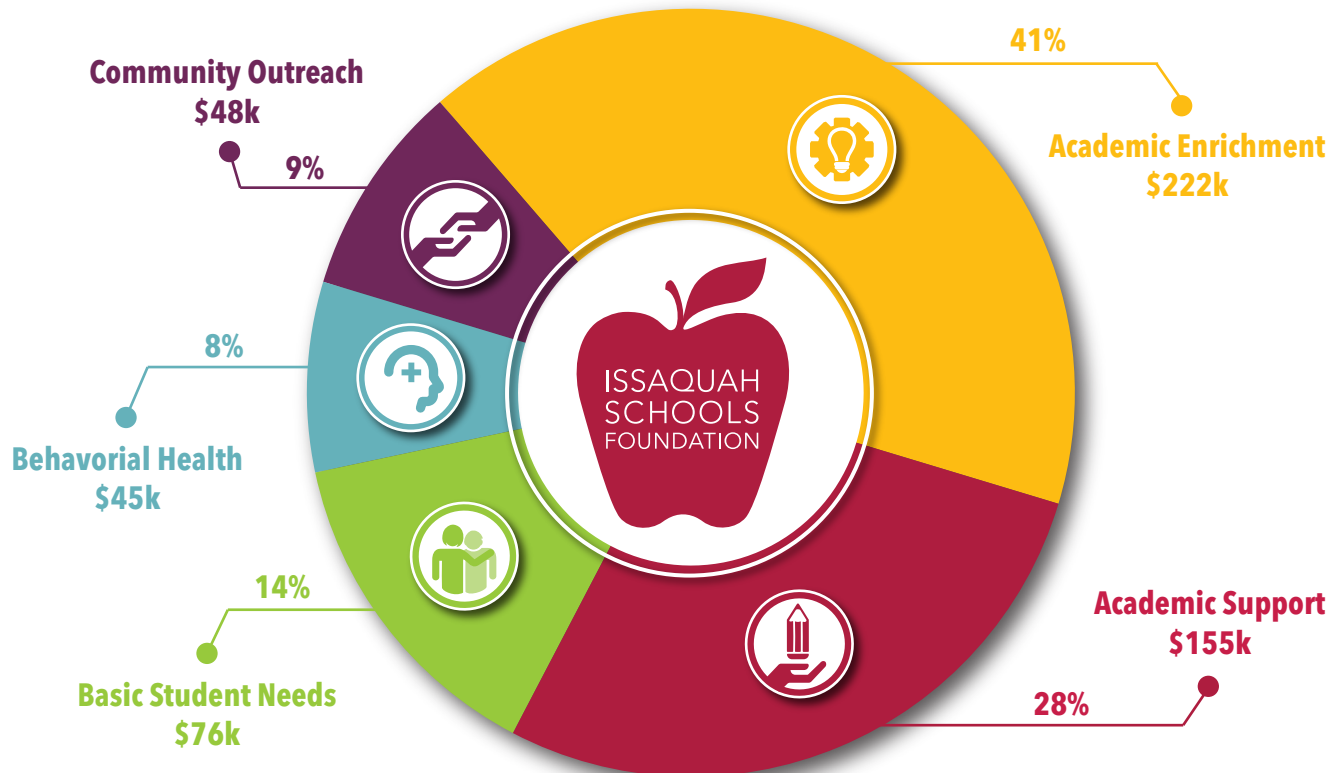
Mission

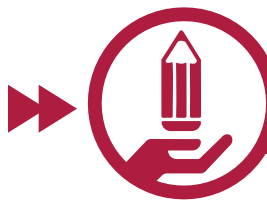
The Issaquah Schools Foundation drives resources district-wide to help students reach the promise of their potential.

Value

- We put student needs first, focusing on the whole child
- We create opportunity
- We collaborate with our partners
- We seek innovation
- We focus on results
- We respect and build relationships with our donors

Your Dollars At Work





ACADEMIC SUPPORT

Program Spotlight :

ELEMENTARY, MIDDLE & HIGH SCHOOLS

In our 2023 Fiscal Year, you provided Before/Afterschool Academic Support to **over 3,000** students across the District. These programs provided extra support with educators in small cohort settings. **368** elementary school students participated in Before/After School Foundation-funded math and reading programs, which resulted in increased class engagement, participation, standardized testing scores, and student confidence. **1,057** middle school student visits were logged across all **6** middle schools and **1,657** high school student visits were logged across our **3** comprehensive high schools in subjects such as biology, chemistry, math, social studies, English language arts, and research.

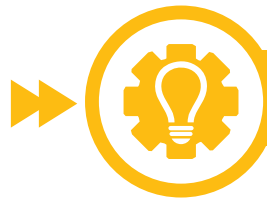
Your Impact :

\$125/Month =

10 Elementary Students Receive Math/Reading Support

"Those students who took advantage of the program were impacted heavily by assisting in their success in school."

– Kevin Adamo, Skyline Assistant Principal



ACADEMIC ENRICHMENT

Program Spotlight :

HIGH SCHOOL CLUBS

You helped provide **\$24,000** of support to student clubs at our 3 comprehensive high schools. Clubs encourage curiosity, create opportunity, and empower students to connect their interests to post-secondary plans. As an example, it is estimated that **over 75%** of all students participating in high school robotics clubs go on to pursue careers in STEM. The Foundation provided funding to **21** diverse high school clubs in 2023, benefiting over **900** student participants. Some examples of clubs included DECA, Baking, Engineering, Mock Trial, Forensics Club, Robotics, and Family, Career, and Community Leaders of America.

Your Impact :

\$40/Month =

10 Robotics Team Member's Fees/Supplies



"Skyline Robotics has changed my life. I love this team, and wouldn't trade it for anything. I'm going to go into engineering when I go to college because I love what I do here and I want to keep doing it."

– Aneesh Kumar, Co-Director of Engineering, Skyline High School Robotics Team

BASIC STUDENT NEEDS

Program Spotlight: **TOOLS4SCHOOL**

Tools4School ensures that all 19,500 students have access to new backpacks and school supplies so they can start each school year with a sense of confidence and readiness. Your generous donations provided support to over **900** students attending **27** Issaquah School District schools in 2023. Your help not only eased the back-to-school burden on families in financial need, but also allowed them to focus on providing other essentials so their student arrived to school, ready to learn, each day.

"This helped our family as we had an unexpected event happen which cut into our budget and I didn't have to worry about their supplies. To be able to choose their backpack was a joy for them."

– ISD family

BEHAVIORAL HEALTH

Program Spotlight:

YOUTH MENTAL HEALTH FIRST AID

Addressing the youth mental health crisis involves multiple stakeholders. Support from our donors allowed the Foundation to provide vital training at no cost to those working closest to our students in our schools. Through full-day, certified Youth Mental Health First Aid trainings, **95** ISD educators, counselors, and staff members gained knowledge, skills, and awareness of resources for students experiencing challenges such as anxiety, depression, eating disorders, and ADHD.

"Valuable course and subject covered well. The course is a reminder of the many hurdles our kids within the schools we work, face daily and how we can keep many eyes on them to help keep them safe and aware they are not alone."

– Miriam Corlette, LSW, ISD Behavioral Specialist

Your Impact:

\$75/Month =

18 New Backpacks &
School Supply Kits

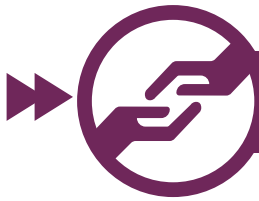


Your Impact:

\$100/Month =

16 ISD Staff YMHFA Trained





COMMUNITY OUTREACH

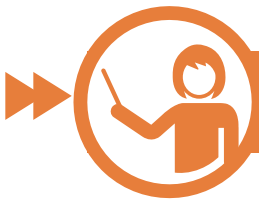
Program Spotlight : CULTURAL BRIDGES

For a student to thrive in school, they must understand how to navigate the system. Our district's diversity has grown at a staggering rate. Over the last 20 years, the percentage of students of color has increased from **15% to 58%**. Your support of Cultural Bridges builds relationships between families, their children, the District, and the broader Issaquah community through outreach, **20+** events, and the online Cultural Bridges magazine. Published in **8** languages, **4** times a year, CB Magazine logged over 55,000 visits and reads from families accessing information in their native languages that help them better navigate the ISD and support their student.

Your Impact :

\$15/Month =

14 Multilingual Families
Connected to Resources



INNOVATION

Program Spotlight : TEACHER GRANTS

In 2023, you helped fund **27** Academic Enrichment grants totaling **\$81,800** to teachers across the District. These benefited classrooms in **6** middle and high schools, **12** elementary schools, as well as our Early Childhood Education: Special Education preschool. Foundation grants fuel innovation, inspiration, and efficiency in the classroom by providing the means to test new ideas, pilot new programs, and explore different approaches to teaching. Some examples of 2023 grants include: **10** LEGO Spike Kits, **350** books at varied reading levels enhancing existing Social Studies & Science curriculum, and a Dissecting microscope & STEM Tools supporting over **200** students.

Your Impact :

\$250/Month =

Academic Enrichment Grant
to Fuel STEM Exploration



"Under the dissecting microscope, the humble spider transformed into a mesmerizing masterpiece of intricate details. It's like discovering a hidden world, where every tiny part tells a story of nature's incredible craftsmanship. Science just became a thrilling adventure right in front of my eyes!"

– Gibson Ek Student

Sponsors

Contributions Received 9/1/2022-8/31/2023

Achiever (\$15,000+)



Microsoft



Producer (\$10,000+)



Champion (\$5,000+)



Initiator (\$2,500+)

DSB Investments
Homestreet Bank
J.P. Morgan Wealth Management

Kiwanis Club of Issaquah
Signarama Redmond
Winderemere Foundation

Supporter (\$1,500+)

ATS Automation
AV Factory
BTG Benefits
Carson Noel PLLC
Edward Jones - Financial Advisor: David A Seligman
Evergreen Chevrolet
Impressions Photography

Michelle Enebo Photography
Mindful Connections Coaching, LLC
Optica Vision Care, Inc
Pacific Law Group
Proliance Orthopaedics and Sports Medicine
The Foot & Ankle Center of Issaquah
Wyatt Gronski PLLC

Top Corporate Matching Partners

Microsoft Apple Google T-Mobile Boeing

Thank you to all our donors and sponsors!

For the most current donor/sponsor listing, please visit:
www.isfdn.org

