



ISSAQUAH
SCHOOLS
FOUNDATION



Welcome Linda Braddock!

We're so excited to introduce our new Development Manager, Linda Braddock, who will be focused on growing our community of individual donors and helping them to stay connected to our mission. Linda joins us from Dress for Success Seattle where she worked as a Development and Communications Manager, raising funds and awareness for high-impact programs and services supporting women on their journeys to financial independence. When not developing fundraising strategies and planning events, she enjoys her favorite "job" - being a mom to her college-aged daughter and son! She also enjoys home decor projects, reading, entertaining, walking her dog, and planning the next adventure with her husband and friends. She's thrilled to be joining the ISF team and we're thrilled to have her.

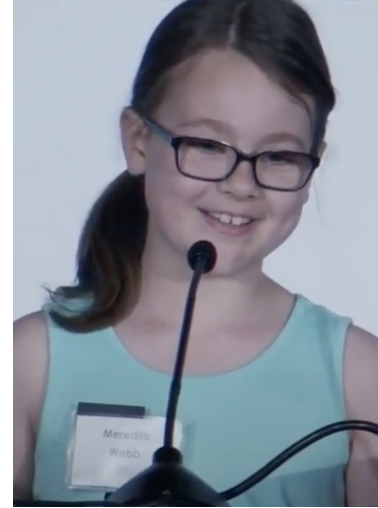
GIVING
TUESDAY

HOW MANY DOORS WILL YOU HELP OPEN BY
DEC 31?

Giving Tuesday is Dec. 3 and it kicks off our year-end goal of raising \$5 for EVERY STUDENT in our district! That's \$90,000!

Why are we raising \$90,000? Do you remember Meredith?

Meredith was a 2nd grader at Newcastle Elementary when she shared her story with us at Nourish Every Mind. After starting Kindergarten during the pandemic, Meredith struggled with Math, sharing *"it started to feel hard. It just moved so fast and I felt like I couldn't keep up. It made me feel anxious and worried. I didn't look forward to Math at all."* She also shared what happened when she was invited to join Math Club, the before- and after school Math support fully funded at elementary schools by Issaquah Schools Foundation donors, *"Everything changed when Math Club started. I felt so much more comfortable because it moved at my pace. Since it was a smaller group of kids, I didn't feel embarrassed to ask questions. Math Club made me feel proud and confident to go to school every day."*



Your year-end support of the Issaquah Schools Foundation will help open doors to opportunity for students just like Meredith at EVERY school in our district!

**\$90,000
could
provide**

- Math support at ALL elementary schools **PLUS** after school homework labs at EVERY high school!
- After school homework help at EVERY middle school **PLUS** take-home decodable books for EVERY kindergarten and 1st grader in the district **PLUS** access to Learning Ally audio subscriptions for struggling readers at ALL levels!
- Support for Fine Arts programs at ALL middle and high schools **PLUS** funding for ALL middle schools robotics programs **PLUS** funding to support classroom innovation through teacher grants!
- Funding for basic needs like food support, testing scholarships, and school supplies **PLUS** funding for books and supports for our pre-K literacy curriculum!

Wondering what we fund at your student's school?

Check your school's funding

Your year-end support helps us expand our funding, opening doors to opportunity for EVEN MORE students!

Help us reach our year-end goal today with a one-time gift OR create more opportunities with a monthly gift.

\$5 per month	24 breakfasts served
\$10 per month	Registration fees for 10 DECA competitors
\$25 per month	Gizmos virtual science labs for 70 middle schoolers
\$50 per month	Learning Ally supports for 180 students
\$100 per month	Math support for 8 elementary students

DONATE TODAY



SUBMIT YOUR MATCH REQUESTS AND DOUBLE YOUR 2024 GIFT!

Many companies will match your contribution so take advantage of the opportunity to double your 2024 donation by submitting it for a matching gift before Dec. 31.

Need a receipt or details about your 2024 gift? Email us at giving@isfdn.org.

Follow the Issaquah Schools Foundation



Issaquah Schools Foundation | PO Box 835 | Issaquah, WA 98027 US

[Unsubscribe](#) | [Update Profile](#) | [Constant Contact Data Notice](#)



Try email marketing for free today!