



ISSAQUAH
SCHOOLS
FOUNDATION

2nd Grade Art Lessons



Alma Thomas Inspired Painting



Cave Hands



Ceramic Beetles



Clay Leaf Bowls



Clay Owls



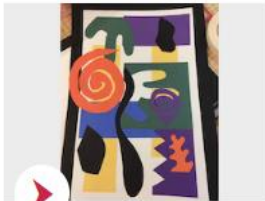
Complementary Color Paper Sculpture



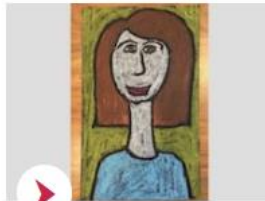
Complementary Hands



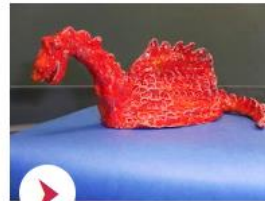
Dot Initials Positive and Negative Space



Drawing with Scissors



Elongated and Symmetrical Portrait



Hoffman Taco Dragon



Kaleidoscope Radial Symmetry



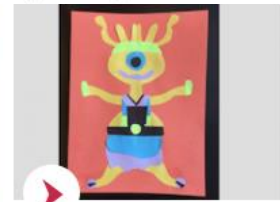
Magritte Big Apple or Little Room



Objects of Unusual Size



Oldenburg Inspired Donuts



Paper Cut Aliens



Picasso Faces



Playing with Proportion Photomontage



Positive Negative Landscape Collage



Really Big Stuffed Pizza Slices



Rooster Wall Pocket



Two Lines Go For a Walk